

Piston actuated valves



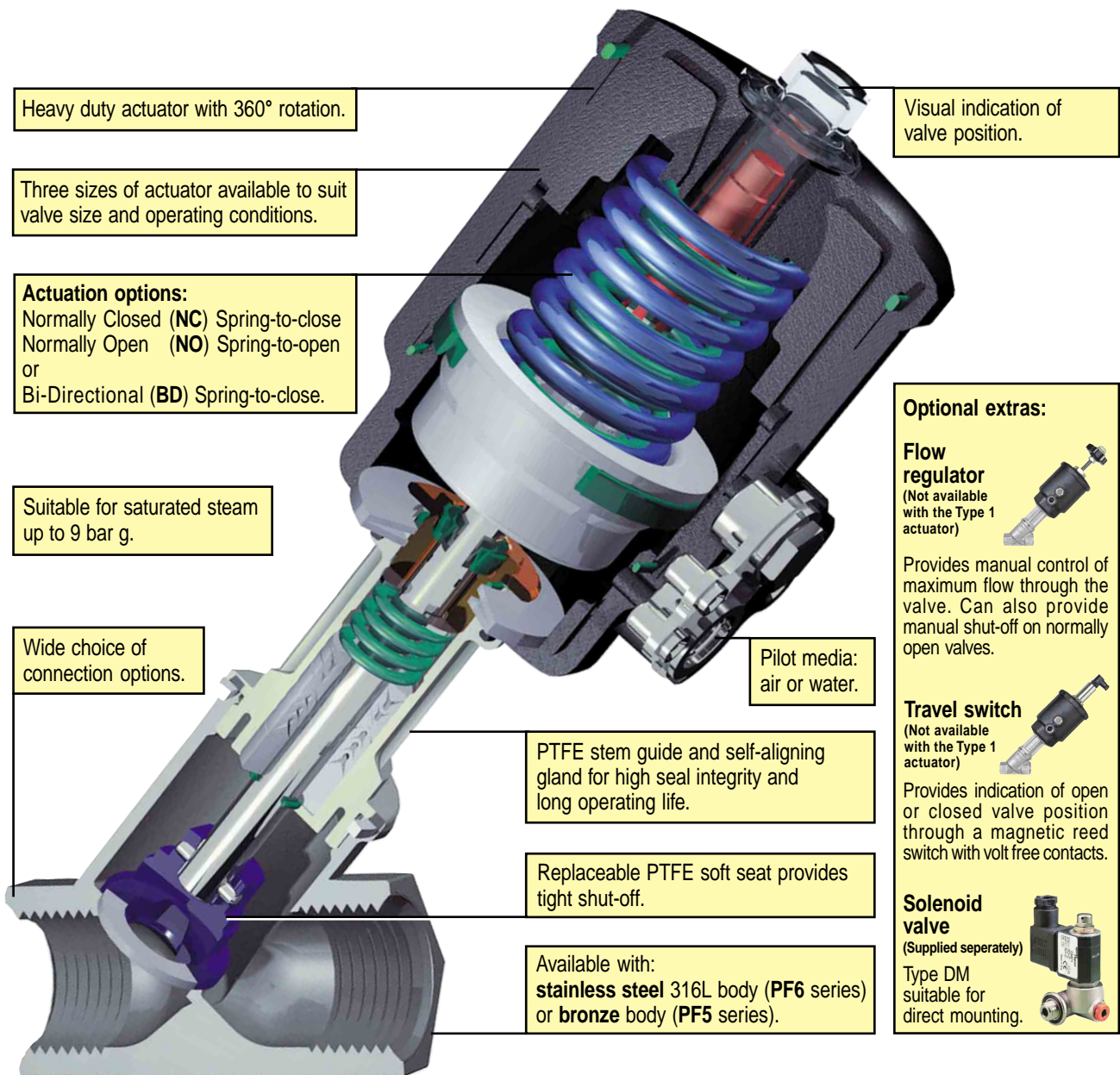
spirax
/sarco

Piston actuated valves for on/off control

The Spirax Sarco range of piston actuated valves provide a competitive solution for OEM on/off control applications by combining many key benefits in one valve.

A unique quality product designed to meet our customer's needs offering reliability combined with high performance shut-off.

Simplicity is the key to providing a product that will suit the needs of a wide range of industrial applications.



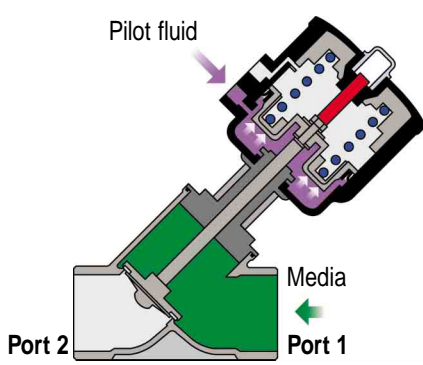
The **PF5** and **PF6** series of robust compact on/off valves provide tight shut-off by utilising a PTFE plug seal. Valve stem sealing is achieved through self-aligning PTFE chevrons to maximise sealing integrity.

A wide range of connection options are available including screwed, flanged, socket weld, butt weld and sanitary clamp.

Normally closed and normally open versions are available plus a version for special bi-directional flow and anti-waterhammer applications. Additional options include a flow regulator, travel switch and directly mounted solenoid pilot valve.

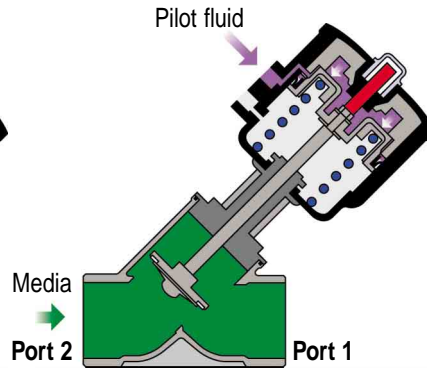
The valves can be used on a wide range of media including steam, air, oil, water and other fluids, and can operate at a maximum temperature of 180°C and pressure ratings up to 40 bar g.

Available types



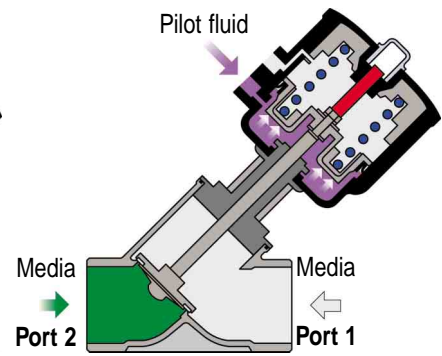
NC (Normally Closed)

These valves are designed for flow over the seat (port 1 to 2). Not recommended for water-hammer prevention.



NO (Normally Open)

These valves are designed for flow under the seat (port 2 to 1). Can be used to prevent water-hammer on valve closure in liquid applications.



BD (Bi-Directional normally closed)

These valves are designed for special applications that require flow in both directions (port 1 to 2 or port 2 to 1) and incorporates an anti-waterhammer design for liquid applications flowing under the seat (port 2 to 1).

Sizes, pipe connections and actuator combinations

Note: PF5 Series bronze bodied, PF6 Series stainless steel (316L) bodied.

Valve type	Pipe connections	Actuator		DN15	DN20	DN25	DN32	DN40	DN50	
		Type	Size	1/2"	3/4"	1"	1 1/4"	1 1/2"	2"	
PF51G	Screwed to BSP or NPT	1	45 mm	•	•					
PF61G	Screwed to BSP or NPT	2	63 mm	•	•	•	•	•	•	
PF62G	Butt weld to DIN 11850 pipe, ANSI B 36.10 / ISO 65 pipe or ISO 4200 pipe	3	90 mm			•	•	•	•	
PF63G	Flanged to EN 1092 or ANSI Class 150 (welded on flanges)	2	63 mm	•	•	•	•	•	•	
		3	90 mm			•	•	•	•	
PF64G	Socket weld to ANSI B 36.10 / ISO 65 pipe	1	45 mm	•	•					
		2	63 mm	•	•	•	•	•	•	
PF65G	Sanitary clamp to ISO 2852	3	90 mm			•	•	•	•	
Kvs values					4.2	7.8	18.6	27	42	51.6

Available range

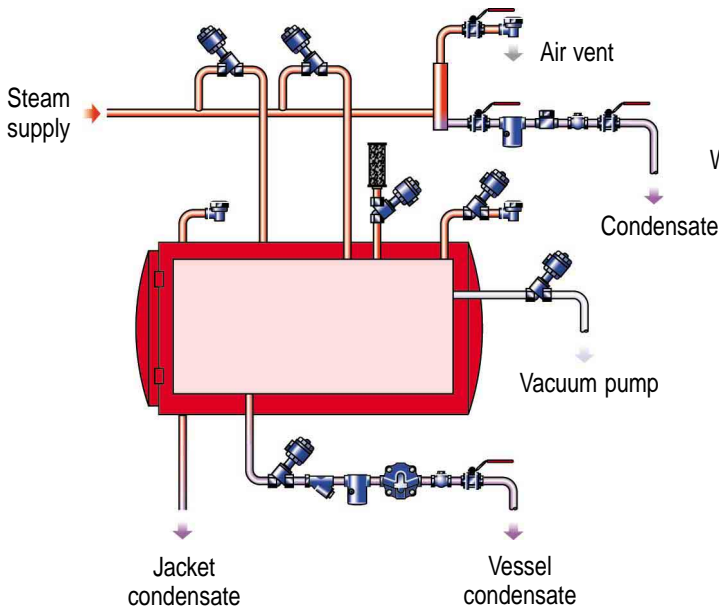
Valve action	Screwed (BSP or NPT)		Butt weld	Flanged (EN 1092 or ANSI)	Socket weld	Sanitary clamp
NC - Normally Closed (flow over seat)	PF51G - 1NC	PF61G - 1NC	PF62G - 1NC	-	PF64G - 1NC	PF65G - 1NC
	PF51G - 2NC	PF61G - 2NC	PF62G - 2NC	PF63G - 2NC	PF64G - 2NC	PF65G - 2NC
	PF51G - 3NC	PF61G - 3NC	PF62G - 3NC	PF63G - 3NC	PF64G - 3NC	PF65G - 3NC
NO - Normally Open (flow under seat)	PF51G - 1NO	PF61G - 1NO	PF62G - 1NO	-	PF64G - 1NO	PF65G - 1NO
	PF51G - 2NO	PF61G - 2NO	PF62G - 2NO	PF63G - 2NO	PF64G - 2NO	PF65G - 2NO
	PF51G - 3NO	PF61G - 3NO	PF62G - 3NO	PF63G - 3NO	PF64G - 3NO	PF65G - 3NO
BD - Bi-Directional normally closed (flow over or under seat)	PF51G - 1BD	PF61G - 1BD	PF62G - 1BD	-	PF64G - 1BD	PF65G - 1BD
	PF51G - 2BD	PF61G - 2BD	PF62G - 2BD	PF63G - 2BD	PF64G - 2BD	PF65G - 2BD
	PF51G - 3BD	PF61G - 3BD	PF62G - 3BD	PF63G - 3BD	PF64G - 3BD	PF65G - 3BD

Typical industries and applications

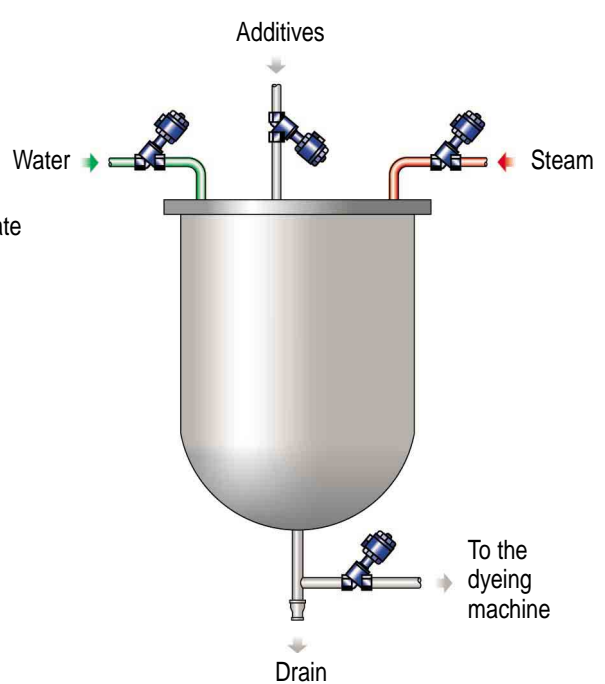
Type PF piston actuated valves provide the ideal solution for many OEM applications for on/off control including

Textiles	Food and Beverages	Laundries	General Industries
Dyeing machines	Cookers	Washers	Foam machines
Additive mixing	Filling machines	Hot water heating	Wood driers
Finishing machines	Bottling machines	Dry cleaning	Tyre pressures
Caustic washing	Heating cabinets	Tumble driers	Paper driers
Pressing machines	Bottle washers	Extractors	Rubber injectors

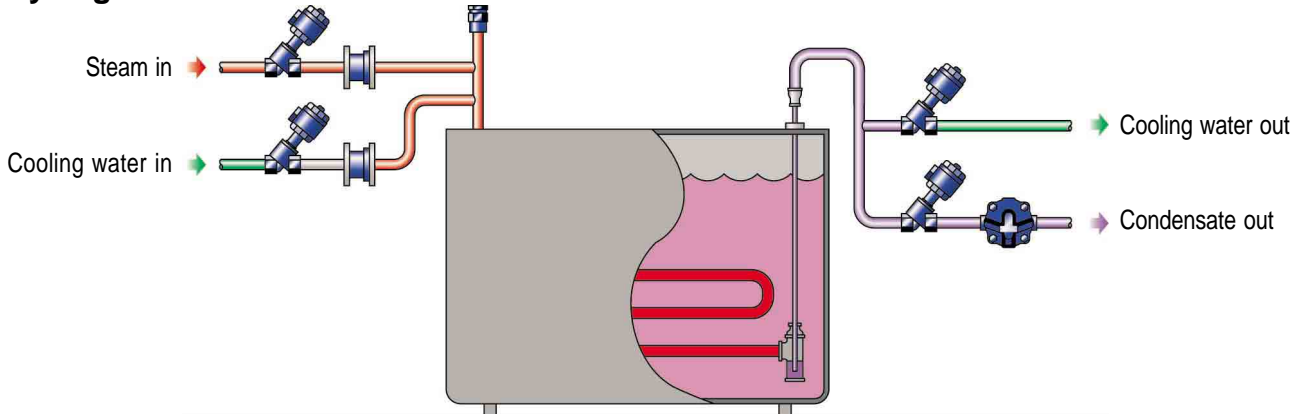
Hospital steriliser



Textile additive mixing



Dyeing machine



Some of the products may not be available in certain markets.

Spirax-Sarco Limited, Charlton House,
Cheltenham, Gloucestershire, GL53 8ER UK.
Tel: +44 (0)1242 521361 Fax: +44 (0)1242 573342
E-mail: Enquiries@SpiraxSarco.com
Internet: www.SpiraxSarco.com

© Copyright 2004 Spirax Sarco is a registered trademark of Spirax-Sarco Limited

spirax
sarco

SB-P373-06

CH Issue 4