



Cert. No. LRQ 0963008

ISO 9001

spirax/sarco

TI-P110-02

ST Issue 6

SIB45

Stainless Steel

Sealed Inverted Bucket Steam Trap

Description

The SIB45 is an all stainless steel sealed inverted bucket steam trap. It is provided with pressure change assemblies for pressure differentials between 0.5 and 45 bar. Traps for 45 bar are provided with an in-built check valve as standard.

Standards

This product fully complies with the requirements of the European Pressure Equipment Directive 97/23/EC.

Certification

This product is available with certification to EN 10204 3.1
Note: All certification / inspection requirements must be stated at the time of order placement.

Sizes and pipe connections

SIB45/5

DN20 and DN25

Butt weld ends ANSI B 16.5 (to suit ANSI B 36.10 Schedule 80 pipe).

Socket weld ends BS 3799 Class 3000 and ANSI B16.11.

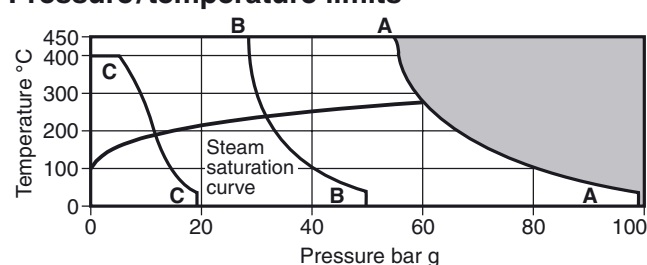
Standard flanges DIN 2547 PN100 and ANSI 600.

SIB45/6, SIB45/8, SIB45/10

3/4" and 1" screwed BSP or NPT.

DN20 and DN25 Standard flanges ANSI 150 and ANSI 300.

Pressure/temperature limits



The product **must not** be used in this region.

- A - A** Screwed, butt weld, socket weld, flanged DIN 2547 PN100 and ANSI 600.
B - B Flanged ANSI 300.
C - C Flanged ANSI 150.

Body design conditions PN100

PMA Maximum allowable pressure 100 bar g @ 37°C

TMA Maximum allowable temperature 450°C @ 54 bar g

Minimum allowable temperature -254°C

PMO Maximum operating pressure for saturated steam service 60 bar g

TMO Maximum operating temperature 450°C @ 54 bar g

Minimum operating temperature 0°C

Note: For lower operating temperatures consult Spirax Sarco

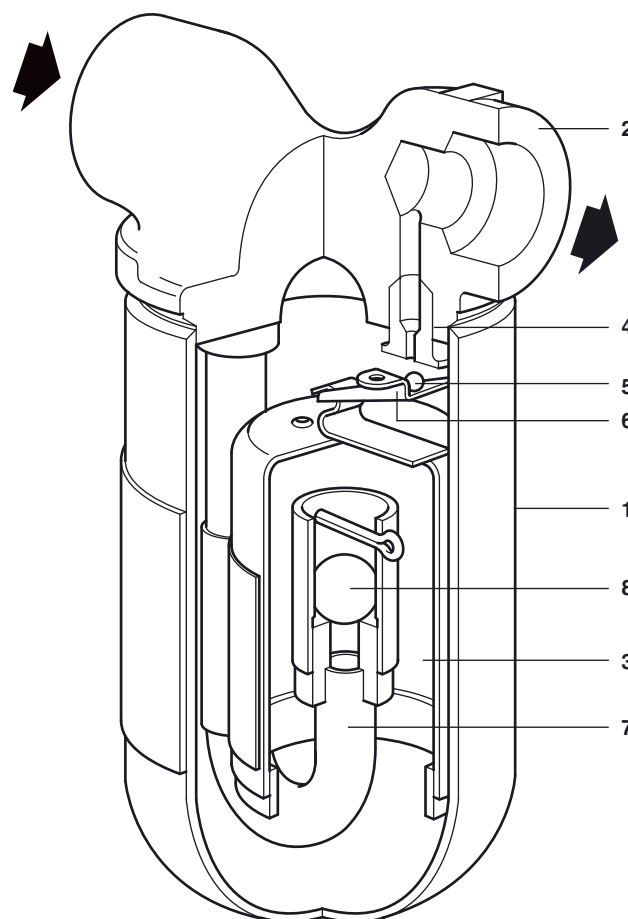
SIB45/10 4.5 bar

SIB45/8 8.5 bar

SIB45/6 20.0 bar

SIB45/5 45.0 bar

Designed for a maximum cold hydraulic test pressure of 150 bar g



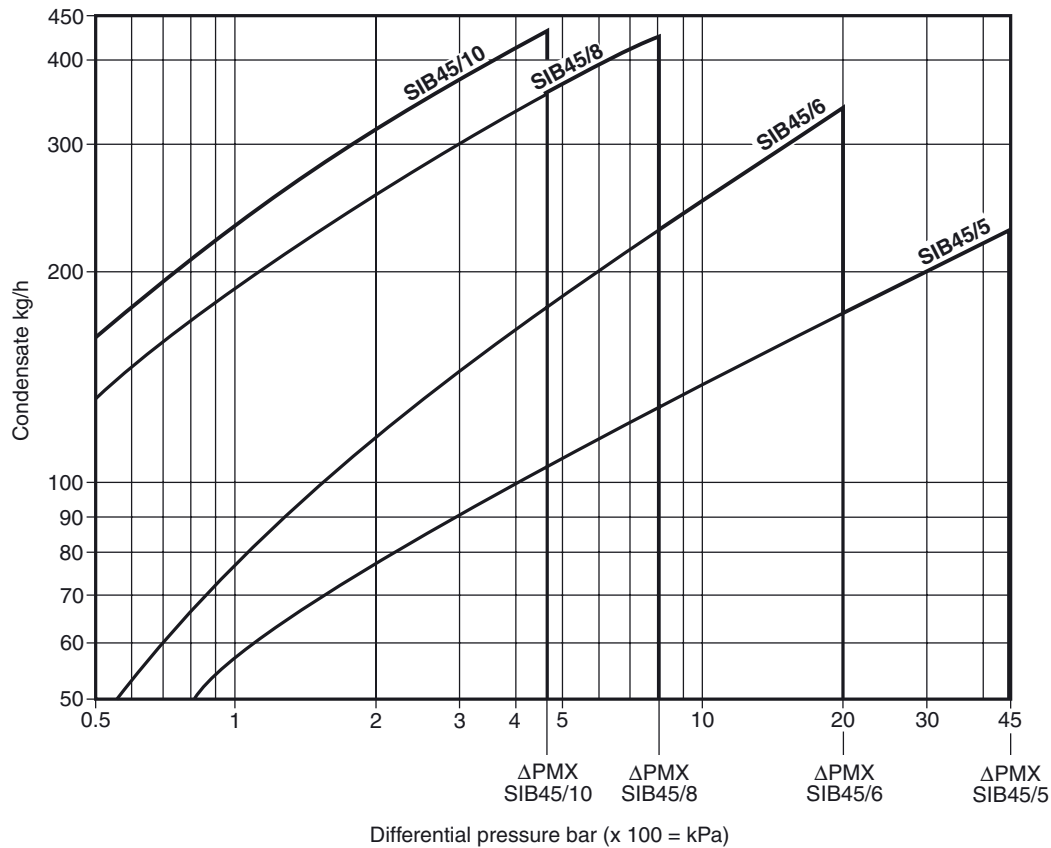
SIB45/5 shown

Materials

No.	Part	Material
1	Cover	Stainless steel ASTM A240 Gr. 304
	Body	Stainless steel ASTM A 182 F 304
2	Pipes	Stainless steel ASTM A 312 Gr. 304
	Flanges	Stainless steel ASTM A 182 F 304
3	Bucket	Stainless steel
4	Valve seat	Stainless steel
5	Valve	Stainless steel
6	Valve lever	Stainless steel
7	Internal tube	Stainless steel
8	Check valve assembly (SIB45/5 only)	Stainless steel

Capacities

Note: A trap should be selected for the most appropriate working pressure differential and not on the basis of load, e.g.: 80 kg/h at 7 bar differential should be handled with the SIB45/8 and not the SIB45/5.



Dimensions / weights (approximate) in mm and kg

Size	A	A1	B	C	D	Weight	
						SW/BW	Flanged
DN20 - 3/4"	110	230	85	175	198	3	6.5
DN25 - 1"	110	230	85	175	198	3	6.5

Safety information, installation and maintenance

For full details see the Installation and Maintenance Instructions (IM-P110-05) supplied with the product.

Installation note:

Install in a horizontal pipe, below the drain point. If installed in exposed positions, consideration should be given to insulating the trap.

How to order

Example: 1 off Spirax Sarco DN20 SIB45/5 sealed inverted bucket steam trap flanged to ANSI 600.

Note: The cover (and flanges when specified) are welded to the body using the TIG process. Welds are approved in accordance with ASME section IX and BS 4870, Part 1.

