



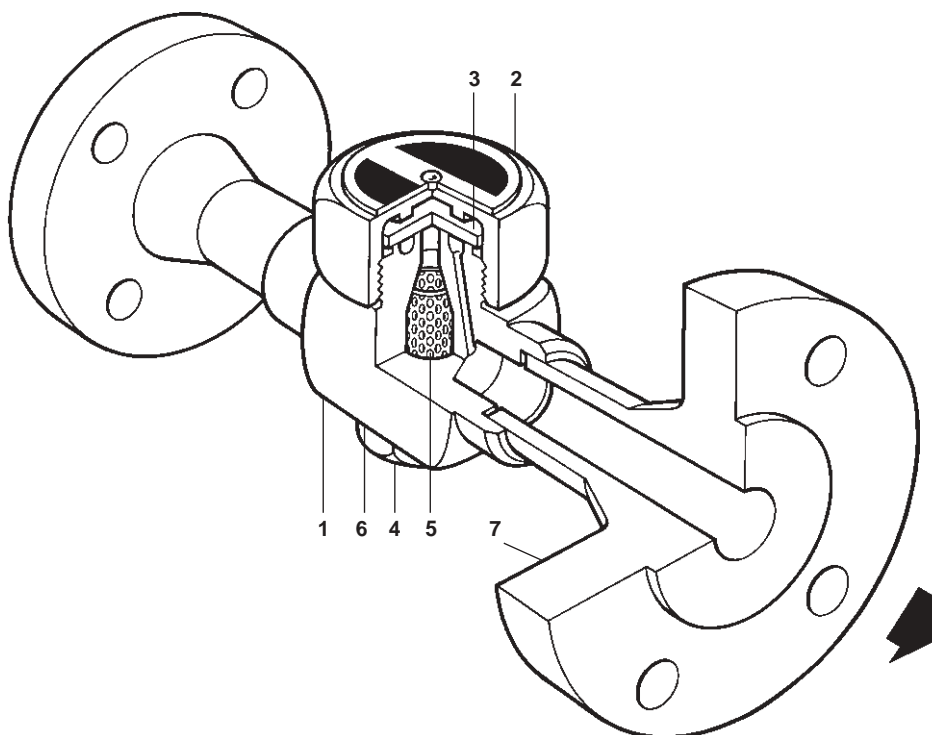
Cert. No. LRQ 0963008

ISO 9001

spirax/sarco

TI-P016-03
ST Issue 2

TD1464 Thermodynamic Steam Trap



Description

The TD1464 is a medium pressure thermodynamic steam trap suitable for steam mains drainage. The body and cap are of stainless steel and the complete unit is readily maintainable. The unit is available with screwed, socket weld, butt weld or flanged end connections.

Standards

The product fully complies with the requirements of the European Pressure Equipment Directive 97/23/EC.

Certification

This product is available with certification to EN 10204 3.1.B. **Note:** All certification/inspection requirements must be stated at the time of order placement.

Sizes and pipe connections

½" and ¾" screwed BSP or NPT.

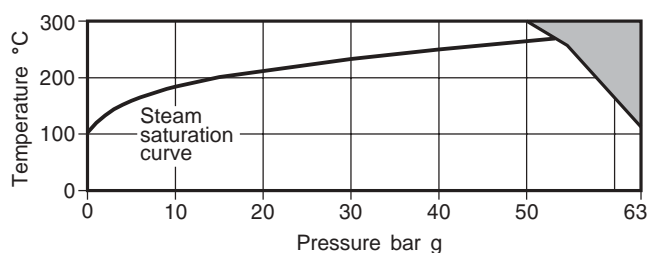
½", ¾" and 1" socket weld ends or butt weld ends.

DN15 and DN20 flanged ends to DIN 2456, ANSI 300, ANSI 600 and ANSI 900.

Materials

No.	Part	Material
1	Body	Stainless steel Z 30 C13
2	Cap	Stainless steel Z 30 C13
3	Disc	Chromium steel BS 4659 Gr. BD2
4	Strainer cap	Stainless steel Z 30 CF13
5	Screen	Stainless steel Z10 CN 18.8
6	Gasket	Copper
7	Flange	Forged steel C22.8

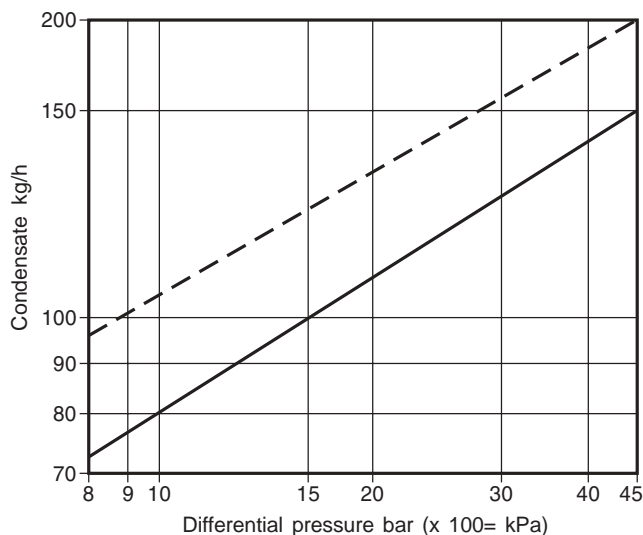
Pressure/temperature limits



The product **must not** be used in this region.

Body design conditions		PN63
PMA	Maximum allowable pressure @ 120°C	63 bar g
TMA	Maximum allowable temperature @ 50 bar g	300°C
Minimum allowable temperature		0°C
PMO	Maximum operating pressure @ 250°C	45 bar g
PMOB	Maximum operating backpressure 50% of upstream pressure	
Minimum pressure for satisfactory operation		8 bar g
TMO	Maximum operating temperature @ 50 bar g	300°C
Minimum operating temperature		0°C
Note: For lower operating temperatures consult Spirax Sarco		
Designed for a maximum cold hydraulic test pressure of 95 bar g		

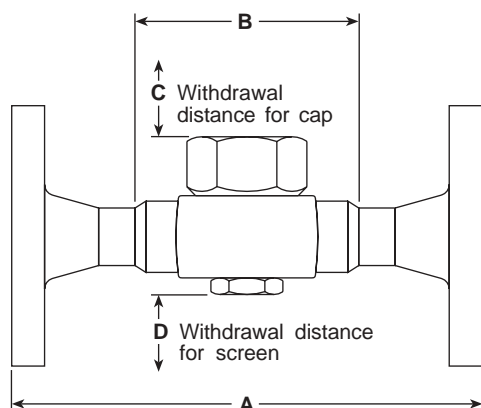
Capacities



Hot water capacity — Cold water capacity - - -

Dimensions / weights (approximate) in mm and kg

Size	A	B	C	D	Weight	
					Screwed Socket weld Butt weld	Flanged
½" - DN15	210	76	40	50	1.2	3.0
¾" - DN20	230	76	40	50	1.4	3.6



Safety information, installation and maintenance

For full details see the Installation and Maintenance Instructions (IM-P016-06) supplied with the product.

Installation note:

The TD1464 must be installed horizontally in the pipeline with the name-plate on top.

Disposal

This product is fully recyclable. No ecological hazard is anticipated with the disposal of this product provided due care is taken.

How to order

Example: 1 off Spirax-Sarco ½" TD1464 having screwed connections.

Spares parts

The spare parts available are shown in heavy outline. Parts drawn in broken line are not supplied as spares.

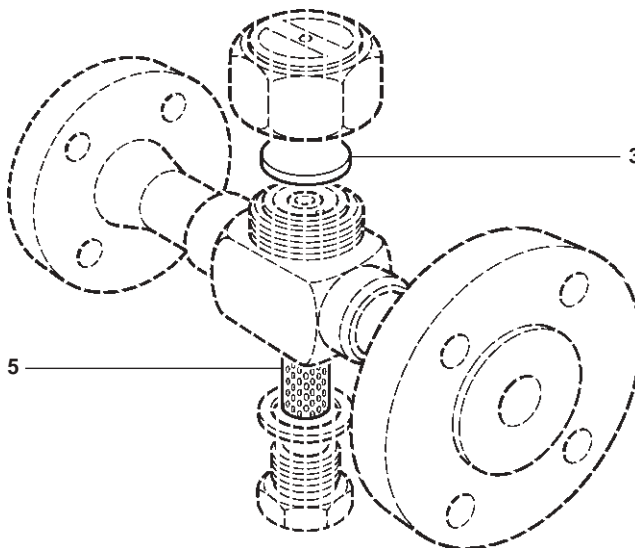
Available spares

Disc (packet of 3)	3
Strainer screen	5


How to order spares

Always order spares by using the description given in the column headed 'Available spares' and state the size and type of trap.

Example: 1 off Strainer screen for a Spirax Sarco ½" TD1464 thermodynamic steam trap.



Recommended tightening torques

Item		N m
2	46 A/F	200 - 220
4	32 A/F	250 - 275