



Cert. No. LRQ 0963008

ISO 9001

spirax/sarco

TI-P027-03
ST Issue 5

NPT Pressure Gauge with Syphon and Cock

Description

Pressure gauge with 4" (100 mm) diameter dial with units marked in psi and inches Hg for vacuum as appropriate. The gauge is supplied with either:

Ring type syphon tube and cock or a 'U' type syphon tube and cock.

Bourdon tube gauge, constructed in accordance with DIN 16005.

For the following options, consult Spirax Sarco:

Pressure gauges with **BSP** connections.

A dial with **MPa units** is available where indicated (*) in the 'Available pressure range' table below.

Available pressure range

Steel	Range	0 to 30 psi
	Range *	0 to 60 psi
	Range *	0 to 100 psi
	Range *	0 to 160 psi
	Range *	0 to 300 psi
	Range *	0 to 400 psi
	Range	30" Hg to 15 psi
	Range	30" Hg to 30 psi
	Range	30" Hg to 60 psi

Note: Where indicated (*) a dial with MPa units is available.

Standards

The product fully complies with the requirements of the European Pressure Equipment Directive 97/23/EC.

Certification

A certificate of conformity is available as standard for this product. A calibration certificate is available by special order at extra cost.

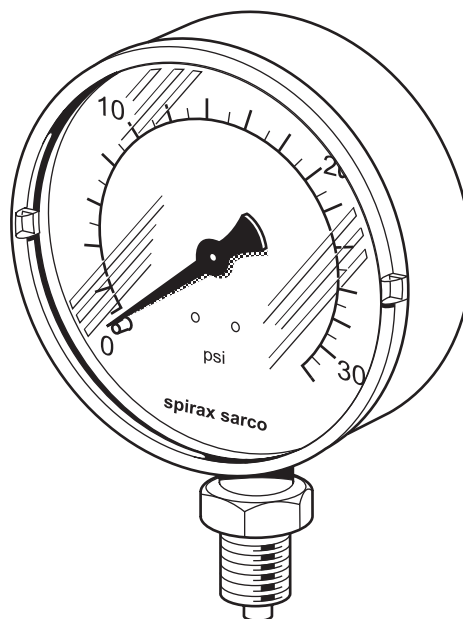
Note: All certification/inspection requirements must be specified at the time of order placement.

Sizes and pipe connections

Pressure gauge	1/2" NPT
Gauge cock	Gauge end 1/2" NPT
	Syphon end 1/2" NPT
Ring / 'U' syphon	Cock end 1/2" NPT
	Process end 1/2" NPT

Materials

Part	Material
Gauge	Case Pressed steel
	Glass Snap fit perspex
	Bourdon tube CuSh 8 (92% Cu 8% Zn)
Ring and 'U' syphon	Mild steel tube BS 1387 heavy grade
Gauge cock	Body Brass
	Handle Phenolic

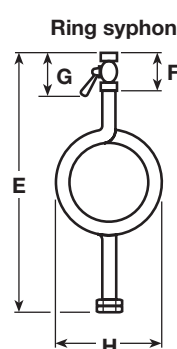
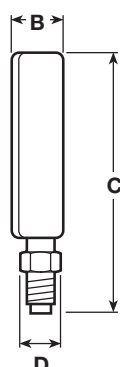
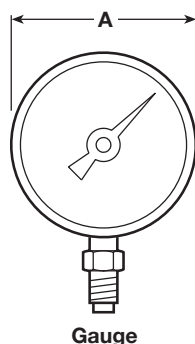


Pressure/temperature limits

Maximum design conditions		Full scale reading
PMA	Maximum allowable pressure	Full scale reading
TMA	Maximum allowable temperature	217°C
Note: Either a 'U' or a ring syphon must be fitted to achieve this.		
Minimum allowable temperature		-40°C
PMO	Maximum operating pressure	Range † 15 psi
Please note: 1. Where indicated (†) these units are available as compound gauges down to full vacuum. 2. For compressed air and steam services the maximum operating pressure for this product is 300 psi.		Range † 30 psi
		Range † 60 psi
		Range 100 psi
		Range 160 psi
		Range 300 psi
		Range 400 psi
Maximum ambient temperature		60°C

Dimensions/weights (approximate) in mm and kg

Gauge					Ring syphon						'U' syphon				
A	B	C	D	Weight	E	F	G	H	Weight Syphon	Cock	J	K	L	Weight Syphon	Cock
100	29	132	22 A/F	0.43	390	66	89	100	1.07	0.23	216	92	175	0.90	0.23



Safety information, installation and maintenance

For full details see the Installation and Maintenance Instructions (IM-P027-02) supplied with the product.

Installation note:

As with all instrumentation, the Spirax Sarco pressure gauge is a delicate measuring device and care has to be taken in its installation and use if it is to remain reliable.

It is recommended that all gauges are fitted with a gauge cock to assist when calibration or maintenance is necessary. When used on steam or other hot gases, gauges **must** be protected from heat by the use of a 'U' syphon or ring syphon tube and gauge cock. The syphon pipe should be primed with water prior to fitting the gauge. Care should be taken if the installation is exposed to frost as gauges can burst.

Disposal:

The product is recyclable. No ecological hazard is anticipated with the disposal of this product providing due care is taken.

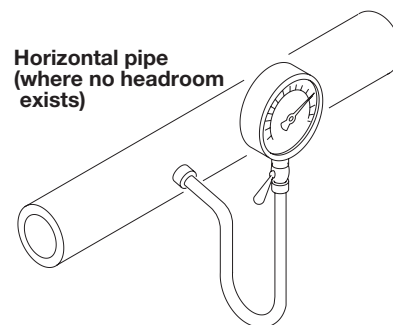
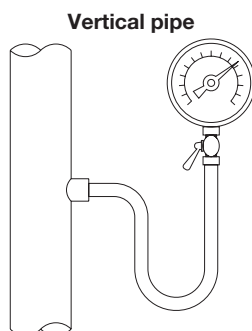
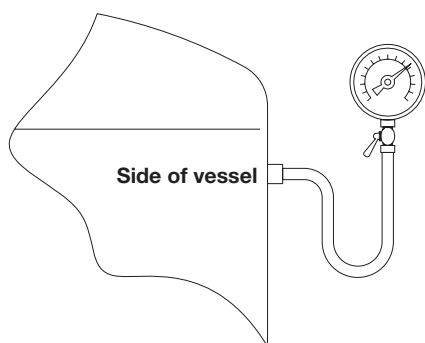
How to order

Example: 1 off Spirax Sarco 1/2" pressure gauge with pressure range of 0 - 160 psi and having screwed NPT connections.

Spare parts

There are no spare parts available for Spirax Sarco pressure gauges.

Typical uses of a 'U' syphon and gauge



Typical uses of a ring syphon and gauge

