



Cert. No. LRQ 0963008

ISO 9001

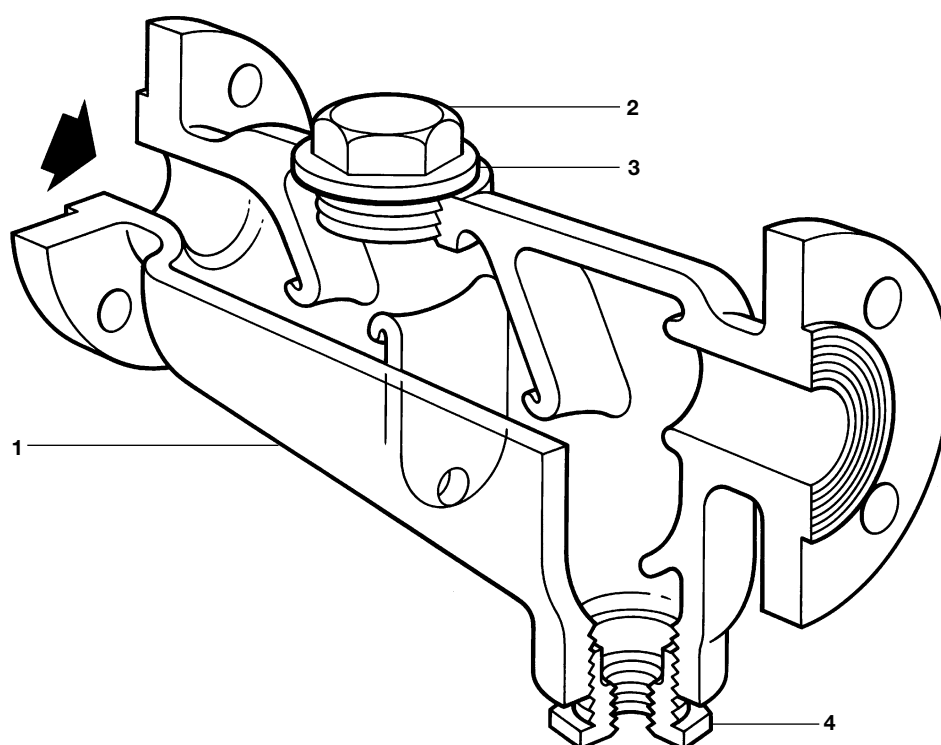
spirax/sarco

S3

Cast Iron Separator (Flanged)

TI-P023-24

ST Issue 4



Description

The S3 separator is a cast iron baffle type separator used for the removal of entrained liquids in steam, compressed air or gas systems. The fitting of insulation jackets will increase the performance of the separator.

Standards

This product fully complies with the requirements of the European Pressure Equipment Directive 97/23/EC.

Certification

This product is available with a manufacturers' Typical Test Report.

Note: All certification/inspection requirements must be stated at the time of order placement.

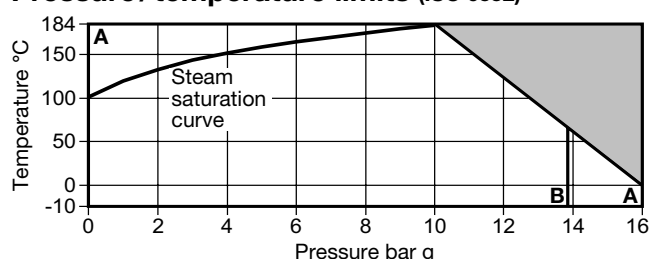
Sizes and pipe connections

DN40, DN50, DN65, DN80, DN100, DN125, DN150 and DN200
Flanged EN 1092 PN16 with screwed BSP drain,
ANSI Class 125 with screwed NPT drain,
JIS/KS 10K with screwed BSP drain, and
AS2129 Table F with screwed BSP drain (DN40 to DN100 only).

Materials

No.	Part	Material	
1	Body	Cast iron	ASTM A126 CI B
2	Plug	SG iron	DIN 1693 GGG 40
3	Gasket	Reinforced exfoliated graphite	
4	Drain reducing bush (not DN200)	Steel	ASTM A105

Pressure/temperature limits (ISO 6552)



The product **must not** be used in this region.

A - A Flanged EN 1092 PN16 and Table F.
A - B Flanged ANSI Class 125 and JIS/KS 10K.

Body design conditions		PN16
PMA	Maximum allowable pressure	16 bar g @ 0°C
TMA	Maximum allowable temperature	184°C @ 10 bar g
Minimum allowable temperature		-10°C
PMO	Maximum operating pressure for saturated steam service	10 bar g
TMO	Maximum operating temperature	184°C @ 10 bar g
Minimum operating temperature		-10°C

Note: For lower operating temperatures consult Spirax Sarco.

Designed for a maximum cold hydraulic test pressure of 24 bar g

Note: S3 Flanged type separators may be supplied with a lower pressure rating than that cast into the body. Reference should be made to the appropriate operating chart to determine the actual product limitations.

Local regulations may restrict the use of this product to below the conditions quoted.



In the interests of development and improvement of the product, we reserve the right to change the specification without notice.

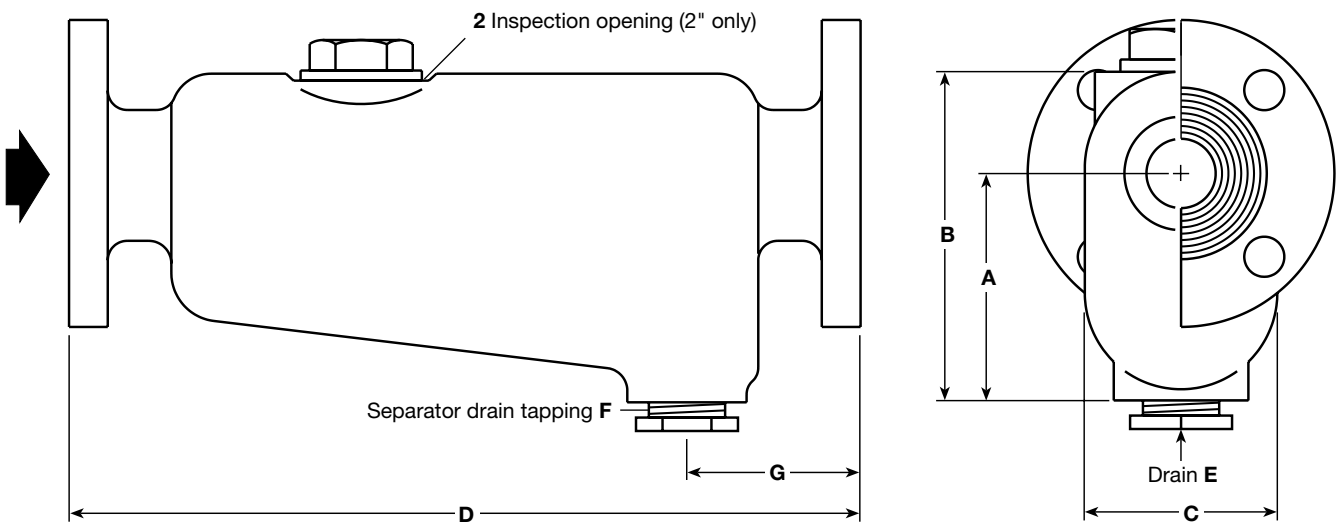
© Copyright 2008

Dimensions/weights and volumes (approximate) in mm, kg and litres

Size	A	B	C	D	E	F	G	Weight	Volume
DN40	111	156	89	365	½"	1½"	94	14.0	1.6
DN50	146	206	117	456	½"	1½"	98	25.4	3.2
DN65	184	232	146	406	¾"	1½"	98	36.7	4.6
DN80	187	264	152	483	1"	1½"	98	44.9	6.5
DN100	238	337	197	692	1"	1½"	118	74.8	13.5
DN125	232	409	381	706	1"	1½"	121	177.8	38.5
DN150	232	409	381	706	1"	1½"	121	181.4	42.5
DN200	305	505	426	762	1½"	1½"	140	254.0	68.0

Recommended tightening torques

Item	Size	 or mm		N m
2	DN40	46 A/F	M56	150 - 165
	DN50	60 A/F	M72	150 - 165
	DN65	46 A/F	M56	150 - 165
	DN80	60 A/F	M72	190 - 210
	DN100	60 A/F	M72	190 - 210
	DN125	60 A/F	M72	190 - 210
	DN150	60 A/F	M72	190 - 210
	DN200	60 A/F	M72	190 - 210



Safety information, installation and maintenance

For full details see the Installation and Maintenance Instructions (IM-P023-55) supplied with the product.

Installation note:

Install in a horizontal pipeline with the drain directly below. **Note:** To ensure that any separated liquid is drained away quickly, a suitable liquid drainer or steam trap must be connected to the drain connection 'E' - consult Spirax Sarco for further details.

Disposal

This product is recyclable. No ecological hazard is anticipated with the disposal of this product, providing due care is taken.

How to order

Example: 1 off DN50 Spirax Sarco S3 separator with cast iron body having flanged EN 1092 PN16 connections.