



Cert. No. LRQ 0963008

ISO 9001

# spirax/sarco

TI-P157-19

ST Issue 5

## Thermocirc Steam/Water Mixing Valve

### Description

The thermocirc steam/water mixing valve provides hot water by blending steam and cold water. The temperature is controlled by a thermostatic element. The set temperature can be set by turning the adjustment nut.

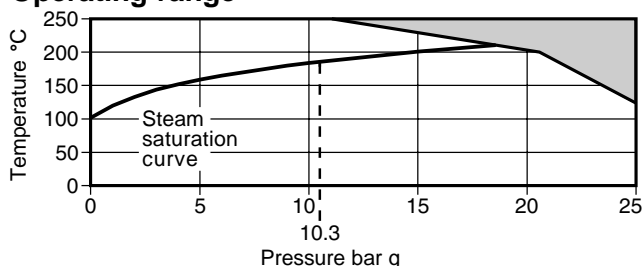
### Sizes and pipe connections

½" screwed BSP to (BS 21) or NPT.

### Limiting conditions

Body design conditions	PN25
PMA - Maximum allowable pressure	25 bar g
TMA - Maximum allowable temperature	260°C
PMO - Maximum operating pressure	10.3 bar g
TMO - Maximum operating temperature	250°C
Temperature range	49°C to 82°C
Designed for a maximum cold hydraulic test pressure of 38 bar g	

### Operating range



The product must not be used in this region.

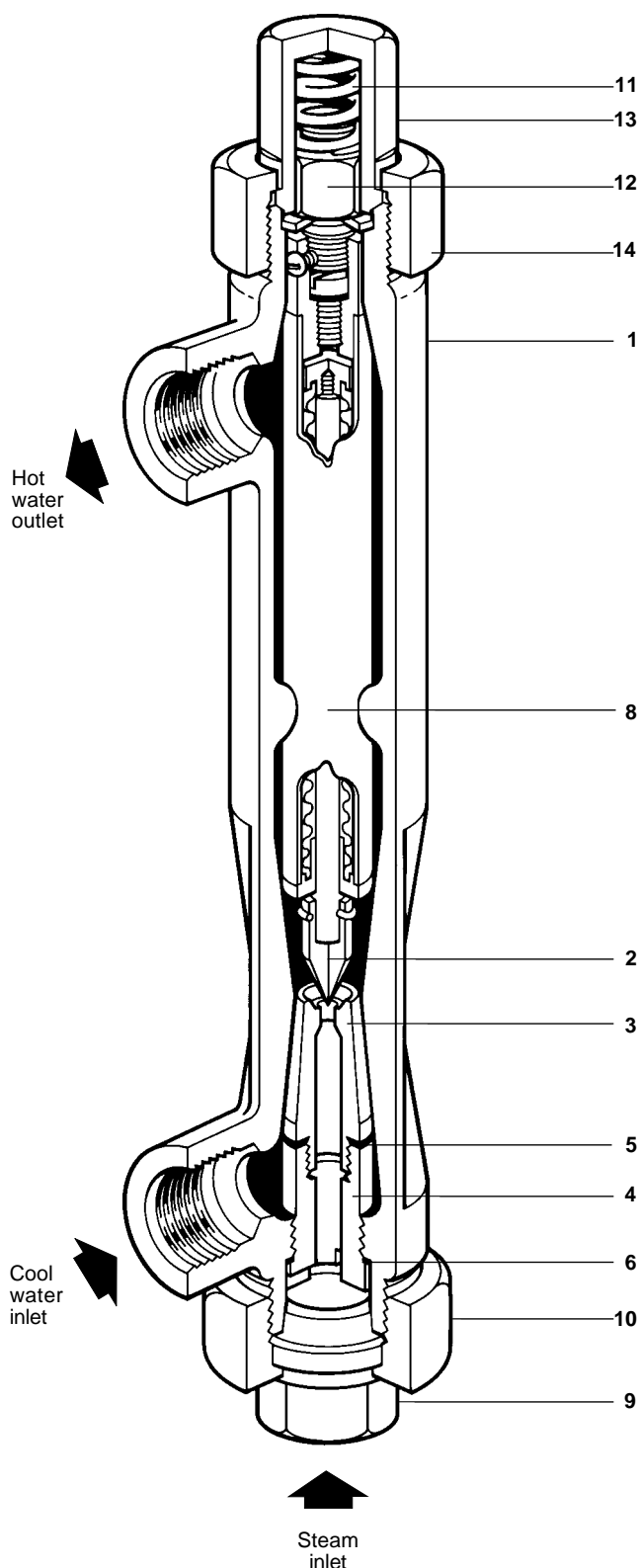
\* PMO Maximum operating pressure when used for steam service.

### Materials

No. Part	Material
1 Body	Copper alloy (LG2) BS EN 1982 CC491K
2 Valve closure member	Stainless steel BS 970 431 S29
3 Valve seat ring	Stainless steel BS 970 431 S29
4 Seat holder	Brass BS 2874 CZ121
5 Seat gasket	Copper BS 2870 C102
6 Seat holder gasket	Copper BS 2870 C102
8 Element	Brass and phosphor bronze BS 2870 CZ108 BS 2870 PB102
9 Nipple	Brass BS EN 12165 CW617N
10 Nut	Brass BS EN 12165 CW617N
11 Spring	Stainless steel BS 2056 302 S26
12 Element nut	Brass BS EN 12165 CW617N
13 Adjustment nut	Brass BS EN 12165 CW617N
14 Lock-nut	Brass BS EN 12165 CW617N

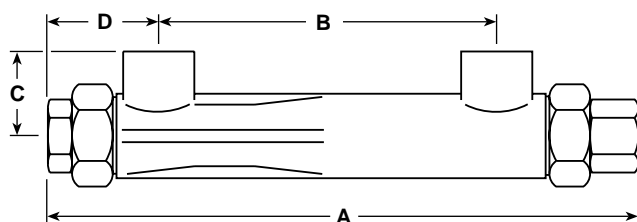
### Certification

The product is available with certification to EN 10204 2.2 for the body and nut. **Note:** All certification/inspection requirements must be stated at the time of order placement.

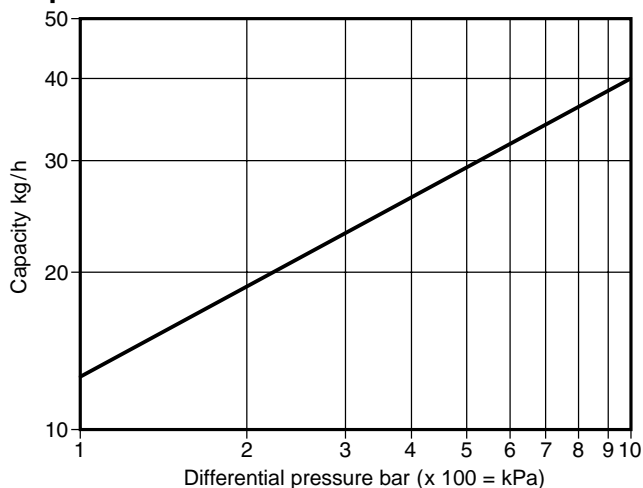


## Dimensions/weight (approximate) in mm and kg

Size	A	B	C	D	Weight
1/2"	270	152	40	50	1.5



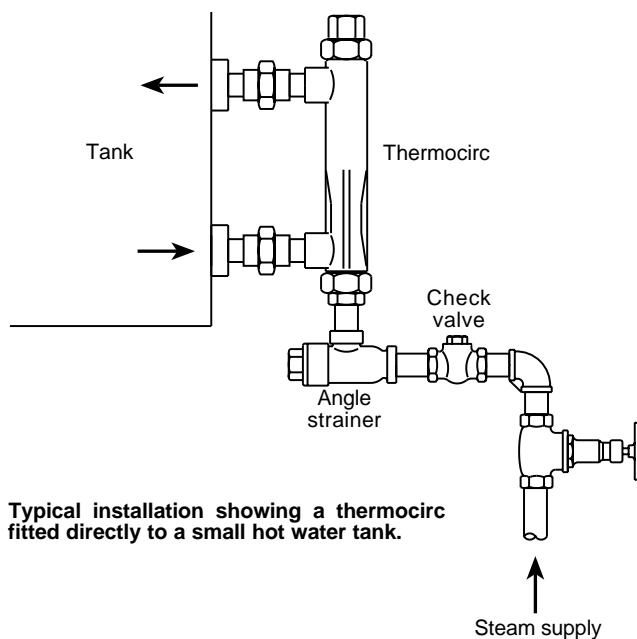
## Capacities



## Safety information, installation and maintenance

For full details see the Installation and Maintenance Instructions (IM-P157-36) supplied with the product.

**Note:** A strainer and check valve should always be fitted in the steam inlet pipework prior to entry into the thermocirc as shown below.



## Disposal

The product is recyclable. No ecological hazard is anticipated with the disposal of this product, providing due care is taken, with exception to the element (8) which should be disposed of separately as it contains a parafin fill.

## How to order

**Example:** 1 off 1/2" Spirax Sarco thermocirc with copper alloy (LG2) body and screwed BSP connections.

## Spare parts

The spare parts available are shown in heavy outline. Parts drawn in broken line are not supplied as spares.

### Available spare

Element set	3, 4, 5, 6, 8, 11, 12
-------------	-----------------------

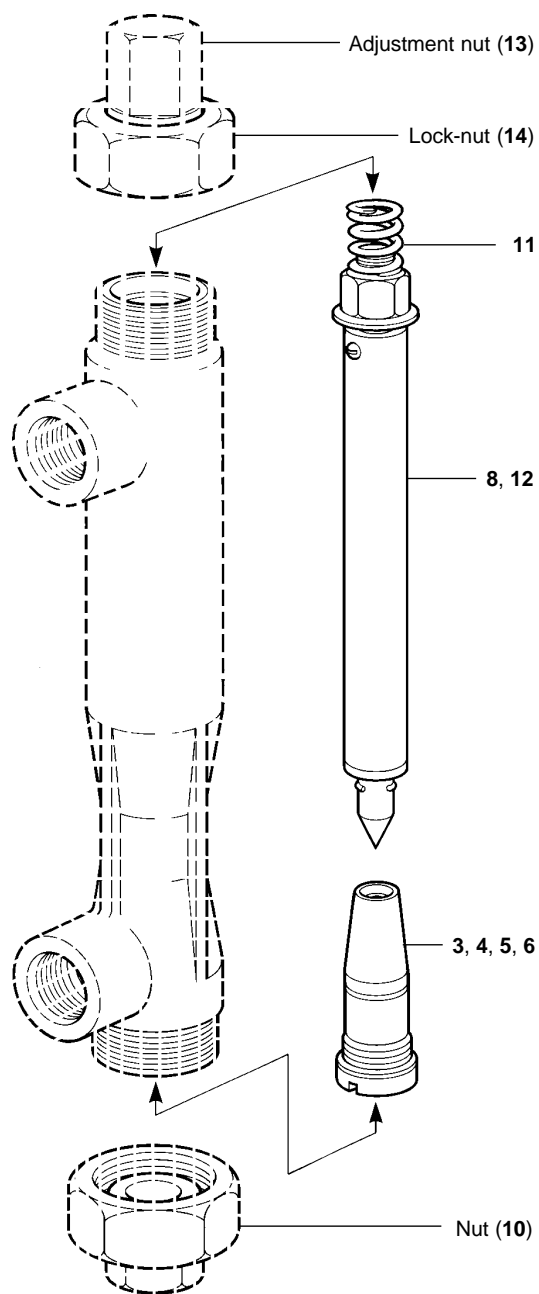
### How to order spares

Always order spares by using the description given in the column headed 'Available spare' and state the size and type of control.

**Example:** 1 - Element set for a 1/2" Spirax Sarco thermocirc.

### How to fit spares

See the Installation and Maintenance Instructions (IM-P157-36) supplied with each thermocirc.



## Recommended tightening torques

Item	or mm	N m
3		30 - 35
10	1 15/32" A/F	80 - 85
14	1 15/32" A/F	80 - 85